

Arlington Memorial Trail Project

December 2022

Arlington County, with support from the Federal Highway Administration (FHWA) Eastern Federal Lands Highway Division (EFLHD), is proposing a new multi-use trail along the east side of Arlington National Cemetery. The proposed trail would be approximately 1.1 miles long and would extend from Columbia Pike, currently being reconstructed, and proceed north between the existing cemetery wall and Route 27/Route 110 (Richmond Highway) to Memorial Avenue, near the Arlington Cemetery Metro station.

The purpose of the project, consistent with the [Bicycle Element of Arlington County's Master Transportation Plan](#), is to provide additional north-south trail connections within the Arlington County network for pedestrians and bicyclists. The trail will allow for safer travel for both bicyclists and pedestrians from the Pentagon City area to Washington, D.C., and the existing trail along Route 110. The project is currently being funded by Arlington County, and designed by FHWA EFLHD. Construction is anticipated to begin in 2024 and be completed by 2025.

Members of the public are invited to participate in the National Environmental Policy Act (NEPA) scoping and National Historic Preservation Act (NHPA) Section 106 process. NEPA outlines the procedures for how federal agencies review the potential effects a project would have on natural and human environment resources, and to minimize those effects where feasible. Section 106 of the NHPA outlines the process by which federal agencies review a project's potential for effects to historic architecture and archaeological resources. The agencies are requesting feedback from the public that will assist in identifying issues and concerns related to the proposed trail project. The agencies are also seeking input that will assist in planning for the Section 106 consultation process of the NHPA, identifying consulting parties, and the undertaking's potential effects on cultural resources.

We look forward to your participation in the process. Please provide comments via email to FHWA at eden.jemal@dot.gov; or by mail to Eden Jemal Federal Highway Administration, USDOT, 22001 Loudoun County Parkway, Building E2, Suite 200, Ashburn, VA 20147 by **February 24, 2023**.

For more information about the project and alternative concepts, projects, and studies ongoing within Arlington County, please visit the [County's project website](#), or [FHWA's project website](#).

Improvements would include the following elements, also shown in the graphic to the right:



A 10-foot-wide asphalt trail for pedestrians and bicyclists with an approximately 3-foot-wide grass strip/shoulder on each side.



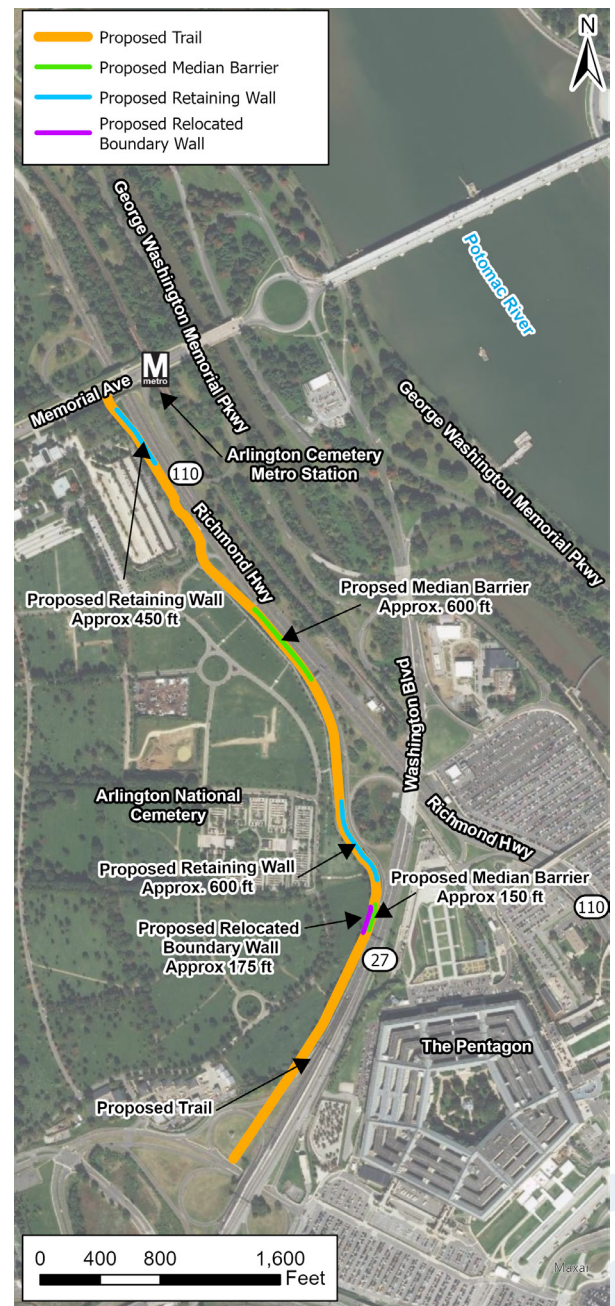
Concrete barriers in select locations between the trail and the adjacent roadway for safety purposes.



Retaining walls with railings where needed along the proposed trail due to several areas with steep topography. The walls are anticipated to only be visible from the roadway.



A segment of the existing cemetery boundary wall may need to be relocated up to 10 feet to provide a consistent width for the trail and its shoulders.



FHWA:
Eden Jemal
Eden.Jemal@dot.gov



Arlington County:
Mark Dennis
medennis@arlingtonva.gov

