



ARLINGTON
NATIONAL CEMETERY

HONOR · REMEMBER · EXPLORE

Welcome

to

The Entry Corridor Area Improvements

Public Meeting



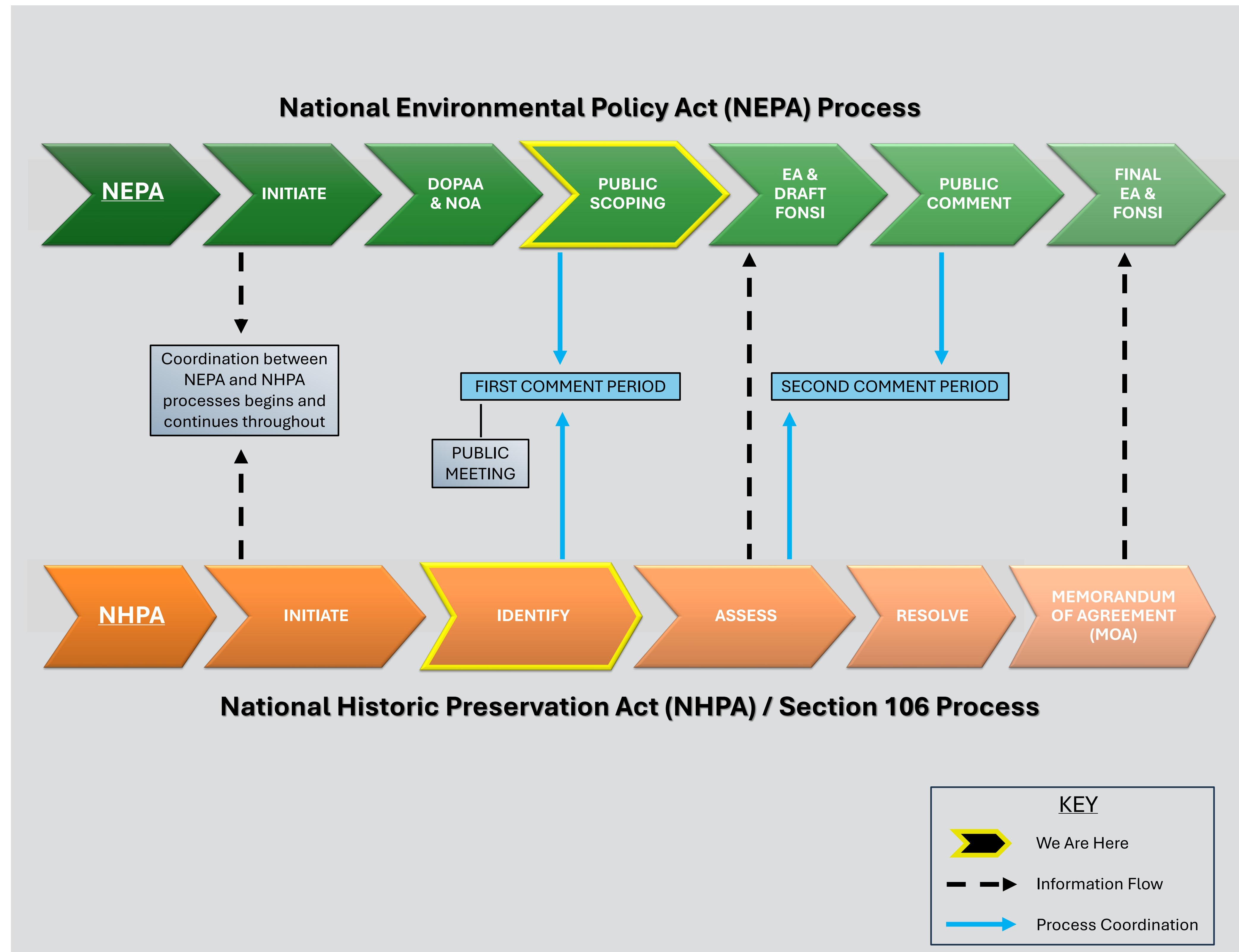
Welcome to this Public Meeting

The purpose of this meeting is to provide information and a venue for stakeholders to give comments on proposed improvements at Arlington National Cemetery (ANC) in accordance with the:

**National Environmental
Policy Act**

and the

**National Historic
Preservation Act**



Preferred Alternative



ARLINGTON
NATIONAL CEMETERY

HONOR · REMEMBER · EXPLORE

Arlington National Military Cemeteries (ANMC) proposes Entry Corridor Area Improvement projects.

Key improvements would include:

- Vehicle and pedestrian circulation and wayfinding
- Parking garage circulation
- Security
- Historical viewsheds
- Educational and visitor experience
- Increase burial capacity

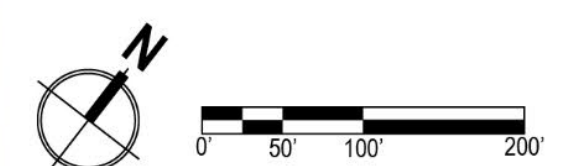
The project would also include the construction of:

- Memorial Avenue crosswalk, traffic lane merger, and plantings to re-establish White Oak and American Holly Hedge historical allée design
- Vehicle screening facilities
- Pedestrian Screening Facility separate from the Welcome Center
- Plazas, gardens, outdoor exhibit/educational areas, and shelters
- A new Welcome Center
- New restroom facilities
- Tram operations facilities separate from the Welcome Center
- Roosevelt Dr. / Eisenhower Dr. Intersection Crosswalk Improvements and Realignment
- Burial spaces



LEGEND:

1. NEW ENTRANCE DRIVE
2. VOS STATION
3. MOBILE GUARD TRAILER
4. FUNERAL SCREENING LANE / ALTERNATIVE BUS DROP-OFF
5. FUNERAL SCREENING
6. GUARD HOUSE AT FUNERAL LOOP
7. RIDESHARE LOOP
8. ARLINGTON MEMORIAL TRAIL
9. STAFF PARKING ENTRANCE
10. VEHICLE SECURITY SCREENING / TICKETING
11. TICKETING / EXIT BOOTH
12. BUS OVERFLOW PARKING
13. ARRIVALS PLAZA
14. BICYCLE RACK
15. EXISTING CURB AND HEDGE ROW CUT
16. AFTER HOURS EXIT TURNSTILE
17. PEDESTRIAN SCREENING FACILITY
18. CENTRAL PLAZA / PARTERRE
19. WELCOME CENTER
20. RESTROOMS
21. TRAM TICKETING OFFICE
22. TRAM SHELTER
23. INTERPRETIVE GARDEN
24. PEDESTRIAN CROSSWALK & SIGNAGE WALL
25. SIDEWALK TO PRESIDENT TAFT GRAVESITE
26. CONNECTING SIDEWALK TO NORTH FLEX COLUMBARIA
27. COLUMBARIA - NORTH FLEX SPACE
28. SIDEWALK EXTENSION
29. EXISTING BIKE SHARE AREA
30. EXISTING ARLINGTON MEMORIAL TRAIL
31. PERIMETER FENCE
32. RETAINING WALL
33. REALIGNED HWY 110 ACCESS ROAD
34. COLUMBARIA - SOUTH FLEX SPACE
35. LANDSCAPE BUFFER
36. CENTRAL PLAZA / PARTERRE SHADING STRUCTURE
37. BACK OF HOUSE / NEW WELCOME CENTER CHILLER
38. NEW ADMINISTRATION CHILLER
39. PEDESTRIAN & BICYCLE CROSSWALK
40. UTILITY CORRIDOR
41. COMMITMENT SHELTER & SIDEWALK FROM ORD & WEITZEL DR TO COLUMBARIA
42. SHIFTED INTERSECTION OF ROOSEVELT DR AND EISENHOWER DR
43. GRANITE PAVEMENT LANE NARROWING AT GUARD TRAILER

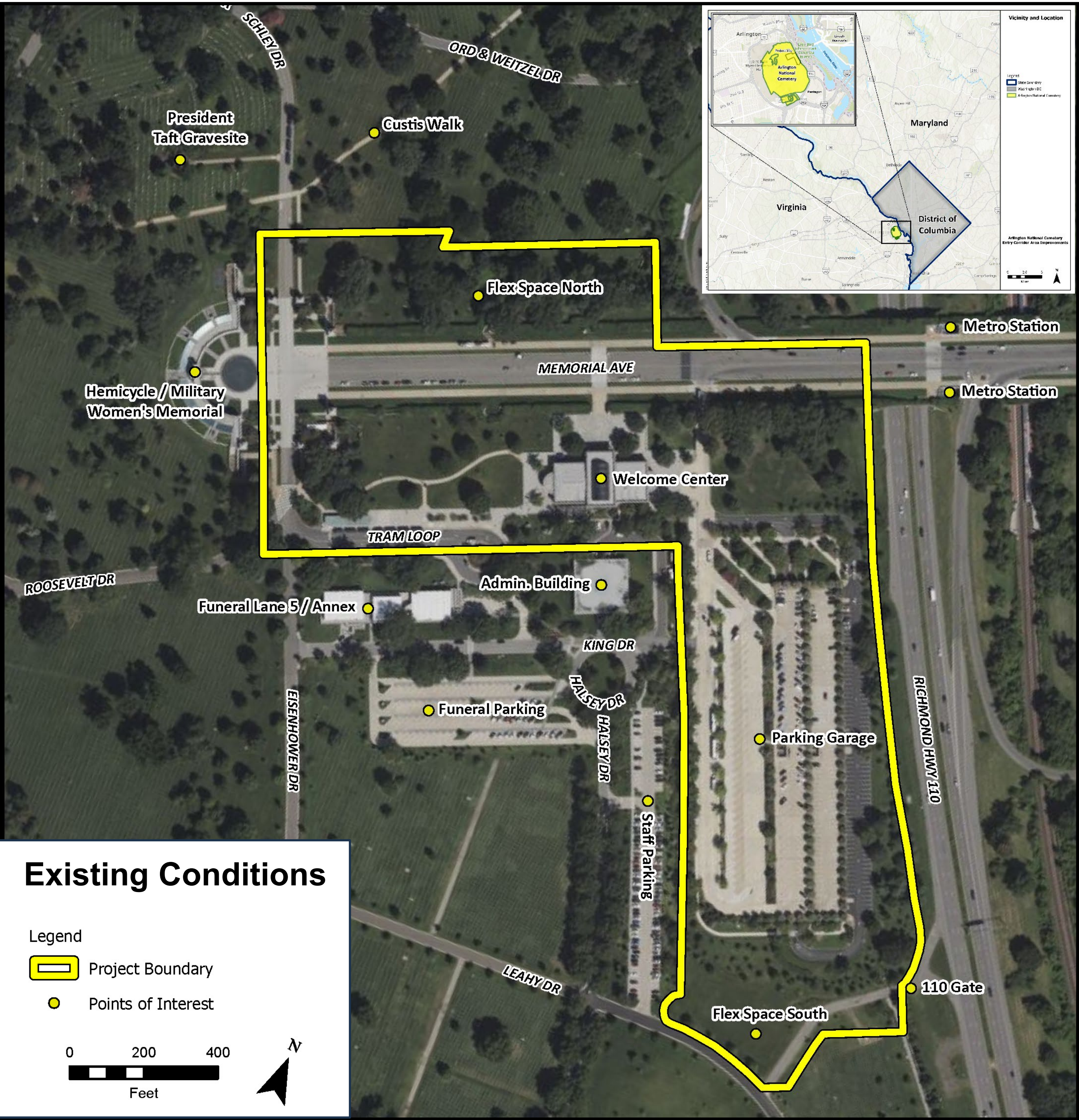


Preferred Alternative

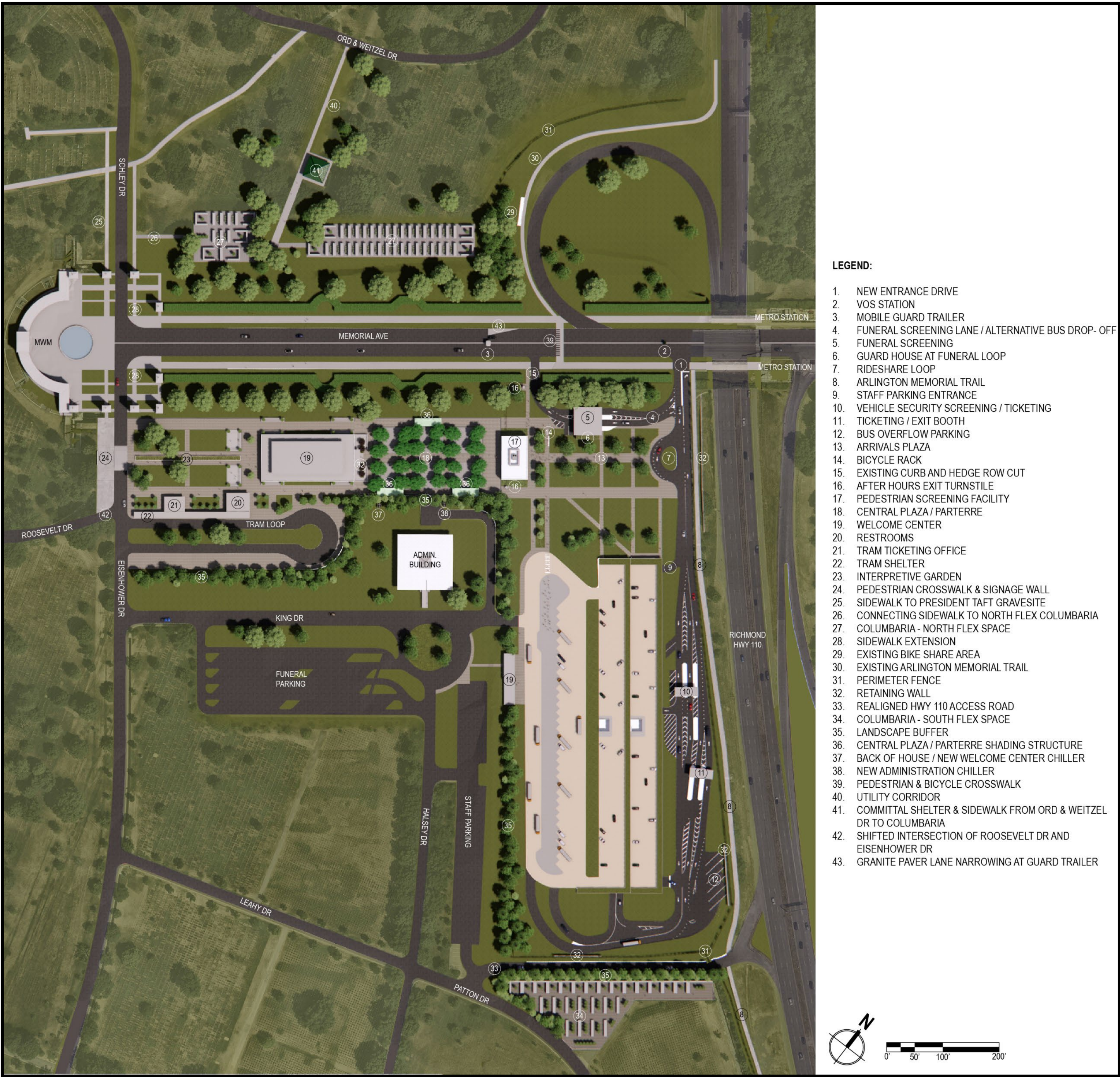


ARLINGTON
NATIONAL CEMETERY
HONOR · REMEMBER · EXPLORE

Location of Preferred Alternative



Preferred Alternative Site Plan



Preferred Alternative



ARLINGTON
NATIONAL CEMETERY
HONOR · REMEMBER · EXPLORE

Under the Preferred Alternative, the following improvements would be made:

Zones 1 & 2 – Memorial Avenue & Parking Garage

Memorial Avenue:

- Relocated pedestrian/ bicycle crosswalk
- New traffic lane merger
- Two new sidewalk extensions connecting Memorial Avenue to the northern and southern half of the cemetery
- Plant new White Oak trees and American Holly hedges to re-establish the allée

Parking Garage:

- Shifting entrance drive to parking garage east
- New screening facilities for personal vehicles and buses
- New funeral screening lane area and guard facilities
- New passenger drop-off / pick-up lane
- New staff parking entrance to parking garage
- New vehicle screening facilities and parking ticketing and payments booths on east side of parking garage
- New bus overflow parking southeast of the parking garage
- New restrooms on the west side of the parking garage
- New Pedestrian Screening Facility

Zone 3 – Central Plaza and Welcome Center

- New Central Plaza with trees, landscaping, and shelters west of the Pedestrian Screening Facility
- New Welcome Center

Zone 4 – Area West of Welcome Center

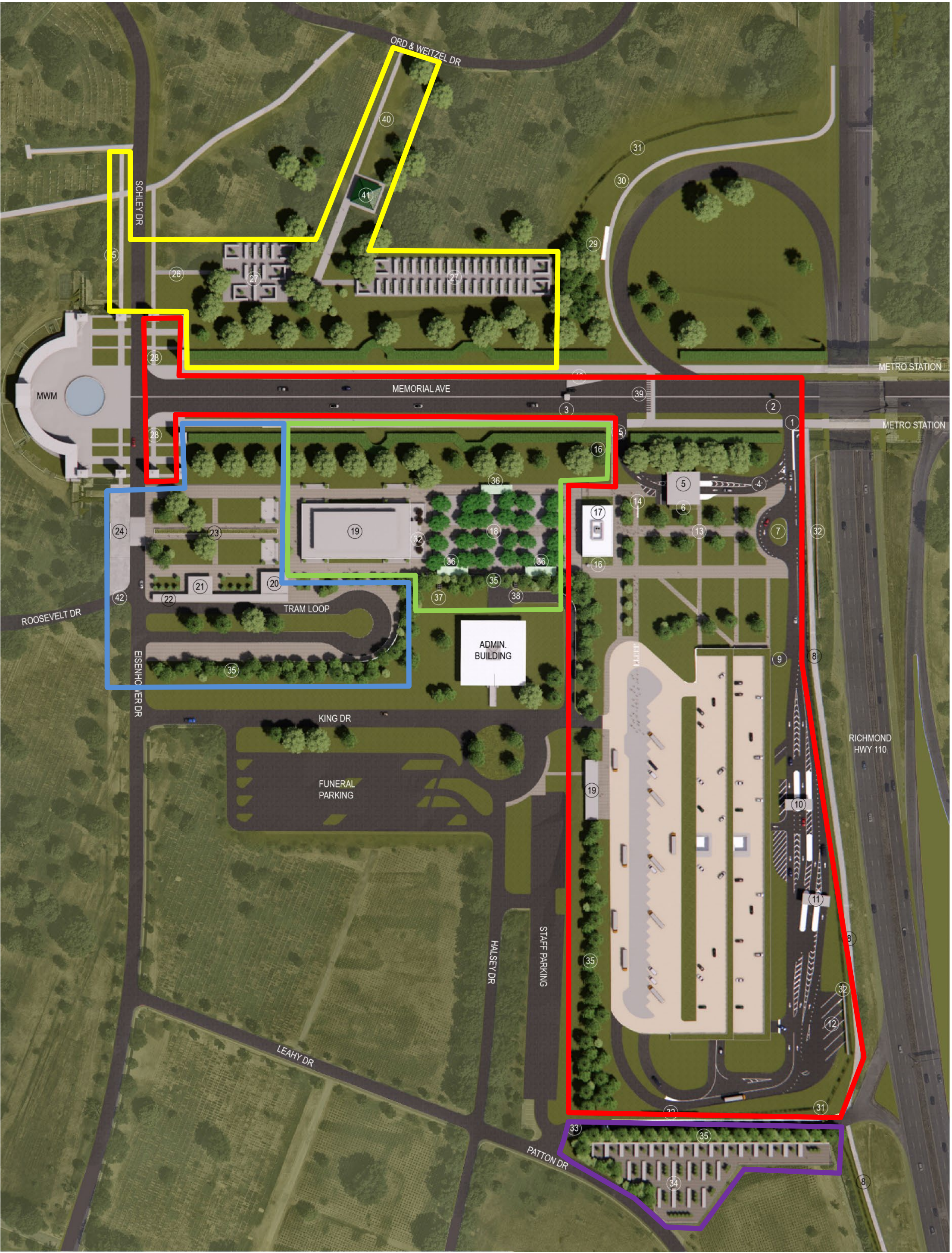
- New Tram Ticketing Office and tram passenger queuing shelter
- New tram loop and additional tram parking. Privacy screening to funeral lot.
- New restroom facility
- New interpretive gardens, two amphitheaters, educational spaces
- New pedestrian crosswalk across Eisenhower Drive and retaining wall with signage. Realigned Roosevelt Dr. / Eisenhower Dr. road intersection

Zone 5 – Flex Space North of Memorial Avenue

- New above-ground burials (columbaria)
- New committal shelter and walkway connecting to Ord & Weitzel Drive
- New connecting sidewalk from Schley Drive to columbaria
- New sidewalk on west side of Schley Drive to connect hemicycle to Custis Walk and President Taft gravesite

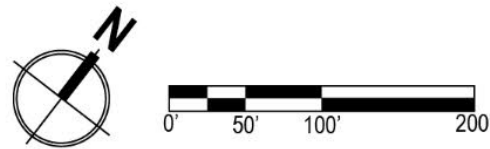
Zone 6 – Flex Space South of Parking Garage

- Shift the existing 110 Gate Access Road
- New above-ground burials (columbaria)



LEGEND:

1. NEW ENTRANCE DRIVE
2. VOS STATION
3. MOBILE GUARD TRAILER
4. FUNERAL SCREENING LANE / ALTERNATIVE BUS DROP-OFF
5. FUNERAL SCREENING
6. GUARD HOUSE AT FUNERAL LOOP
7. RIDESHARE LOOP
8. ARLINGTON MEMORIAL TRAIL
9. STAFF PARKING ENTRANCE
10. VEHICLE SECURITY SCREENING / TICKETING
11. TICKETING / EXIT BOOTH
12. BUS OVERFLOW PARKING
13. ARRIVALS PLAZA
14. BICYCLE RACK
15. EXISTING CURB AND HEDGE ROW CUT
16. AFTER HOURS EXIT TURNSTILE
17. PEDESTRIAN SCREENING FACILITY
18. CENTRAL PLAZA / PARTERRE
19. WELCOME CENTER
20. RESTROOMS
21. TRAM TICKETING OFFICE
22. TRAM SHELTER
23. INTERPRETIVE GARDEN
24. PEDESTRIAN CROSSWALK & SIGNAGE WALL
25. SIDEWALK TO PRESIDENT TAFT GRAVESITE
26. CONNECTING SIDEWALK TO NORTH FLEX COLUMBARIA
27. COLUMBARIA - NORTH FLEX SPACE
28. SIDEWALK EXTENSION
29. EXISTING BIKE SHARE AREA
30. EXISTING ARLINGTON MEMORIAL TRAIL
31. PERIMETER FENCE
32. RETAINING WALL
33. REALIGNED HWY 110 ACCESS ROAD
34. COLUMBARIA - SOUTH FLEX SPACE
35. LANDSCAPE BUFFER
36. CENTRAL PLAZA / PARTERRE SHADING STRUCTURE
37. BACK OF HOUSE / NEW WELCOME CENTER CHILLER
38. NEW ADMINISTRATION CHILLER
39. PEDESTRIAN & BICYCLE CROSSWALK
40. UTILITY CORRIDOR
41. COMMITTAL SHELTER & SIDEWALK FROM ORD & WEITZEL DR TO COLUMBARIA
42. SHIFTED INTERSECTION OF ROOSEVELT DR AND EISENHOWER DR
43. GRANITE PAVEMENT LANE NARROWING AT GUARD TRAILER



Alternatives Considered



ARLINGTON
NATIONAL CEMETERY
HONOR · REMEMBER · EXPLORE

Under Alternative 1 the following improvements would be made:

1

Reconfigured Parking Garage and Small Arrivals Plaza

- Retain most of existing parking garage pavement and construct four screening booths.

2

Renovate existing Welcome Center:

- After new Pedestrian Screening Facility is operational, remove screening area, Tram Ticketing office, and portions of restrooms in existing Welcome Center and renovate ground floor to convert to additional exhibit spaces

3

Area West of Welcome Center:

- Minimal interpretive gardens and outdoor educational spaces

4

Flex Space North of Memorial Avenue:

- In-ground burial scheme to increase burial capacity by ~1,000

5

Flex Space South of Parking Garage:

- In-ground burial scheme to increase burial capacity by ~1,000

Alternative 1 was dismissed for the following reasons:

- Insufficient Arrivals Plaza queuing space, close vehicle proximity from entrance road to pedestrians, new facilities adjacent to Welcome Center add to pedestrian congestion
- The improvements to the Welcome Center were minimal, expensive, and did not address the need for educational spaces, a theater, and sufficient exhibit space to display UV sensitive artifacts.
- Eisenhower Dr. crosswalk did not provide sufficient improvements to make intersection intuitive
- Alternative 3/3A offered greater burial capacity



Alternative 1 entails minimal improvements, ensuring continuity with existing structures and functionalities

Alternatives Considered



ARLINGTON
NATIONAL CEMETERY

HONOR · REMEMBER · EXPLORE

Under Alternative 2 the following improvements would be made:

Reconfigured Parking Garage and Large Arrivals Plaza

- Relocate parking garage entrance road to east and bus and vehicle access to parking garage.
- Funeral screening lane

Renovate and Build Addition to Welcome Center:

- Build addition and relocate the pedestrian screening area from north entrance the east side addition to provide intuitive entrance from Arrivals Plaza and parking garage areas.
- Build addition to increase exhibit and flex spaces

Area West of Welcome Center:

- Moderate gardens, amphitheater, and educational spaces.
- Tram operations adjacent to tram loop
- Restroom seamlessly integrated with new tram buildings
- Demolish Funeral Lane #5 and building privacy screening

Flex Space North of Memorial Avenue:

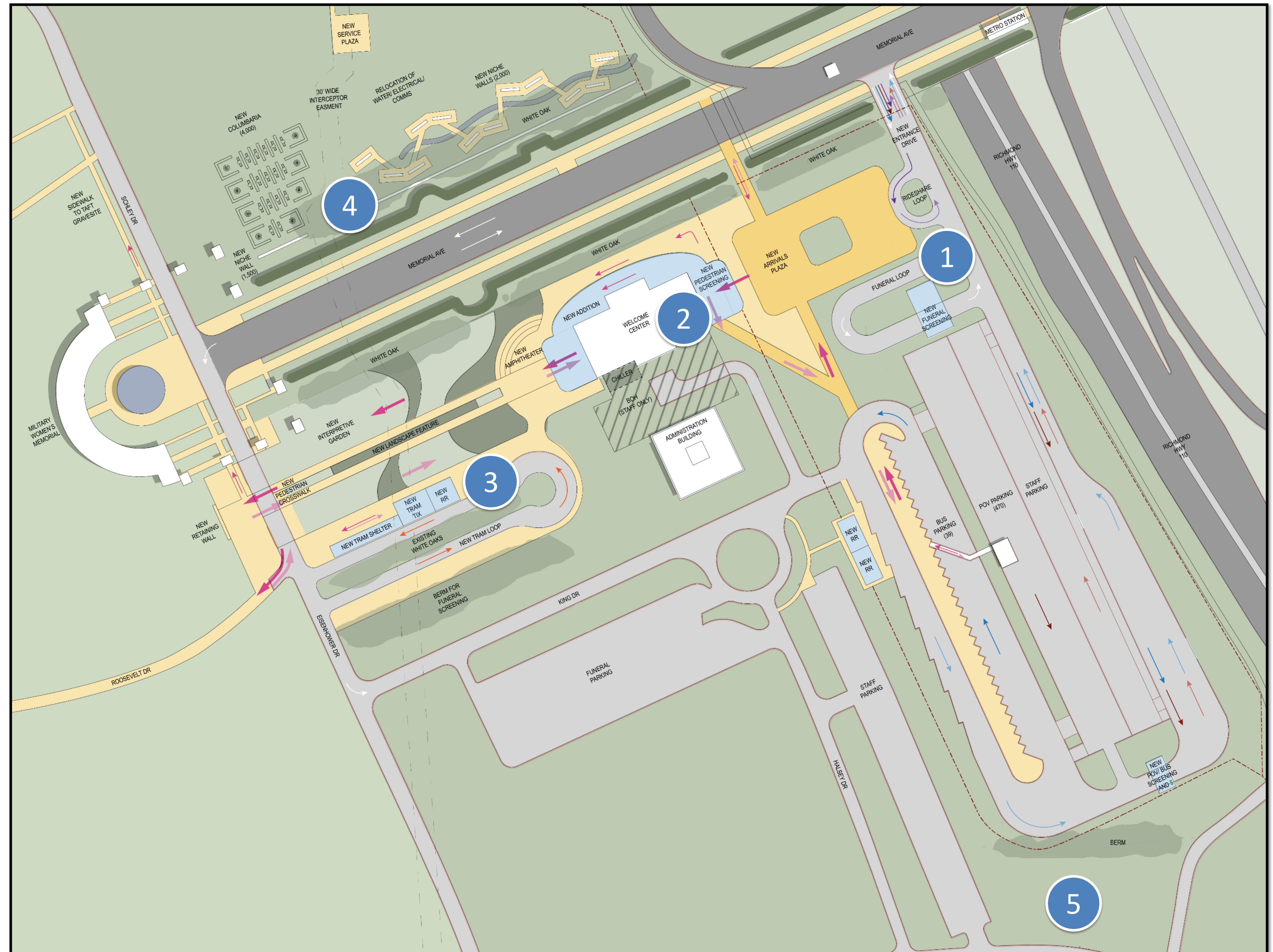
- New columbaria, niche walls, committal shelter, and sidewalks. Increasing the burial capacity of ANC by approximately 6,000.

Flex Space South of Parking Garage:

- Above-ground and in-ground burial hybrid scheme to increase burial capacity by approximately 2,500.

Alternative 2 was dismissed for the following reason(s):

- The improvements to the Welcome Center were minimal, would have cost nearly as much as a new Welcome Center, and did not address the need for educational spaces, a theater, and sufficient exhibit space to display UV sensitive artifacts.
- Alternative 3/3A offered greater burial capacity



Alternative 2 suggests moderate improvements, aiming to address key deficiencies while maintaining overall coherence.

Alternatives Considered



ARLINGTON
NATIONAL CEMETERY

HONOR · REMEMBER · EXPLORE

Under Alternative 3 the following improvements would be made:

1

Reconfigured Parking Garage and Large Arrivals Plaza

- Parking garage access from Hwy 110, reducing vehicle and pedestrian conflicts along Memorial Ave.

2

New Welcome Center:

- Constructing a new Welcome Center around the existing to phase construction. Elliptical shape provides better circulation through exhibit spaces
- New pedestrian screening area integrated into building to consolidate structures, facing Arrivals Plaza
- Demolition of the existing building, once new Welcome Center is operational

3

Area West of Welcome Center:

- Significant interpretive gardens, amphitheater and educational spaces.
- Sidewalk to hemicycle observation deck

4

Flex Space North of Memorial Avenue:

- New columbaria, increasing the burial capacity by ~10,000

5

Flex Space South of Parking Garage:

- New above-ground columbaria to increase the burial capacity by ~5,500

Alternative 3 was dismissed for the following reason(s):

- Alternative 3 was eliminated in favor of Alternative 3A, a new Welcome Center completely separated from existing Welcome Center, due to constructability concerns and 3A would be constructed faster overall and result in fewer disruptions to the daily operations of ANC.



Alternative 3/3A proposes significant enhancements, offering transformative changes to elevate the visitor experience and functionality of the ANC Entry Corridor Area.

NEPA Resources To Be Analyzed



ARLINGTON
NATIONAL CEMETERY
HONOR · REMEMBER · EXPLORE

What is an Environmental Assessment (EA)?

An Environmental Assessment (EA) will be prepared. The EA determines if a federal action has the potential to cause significant environmental effects.

Generally, the EA includes a brief discussion of:

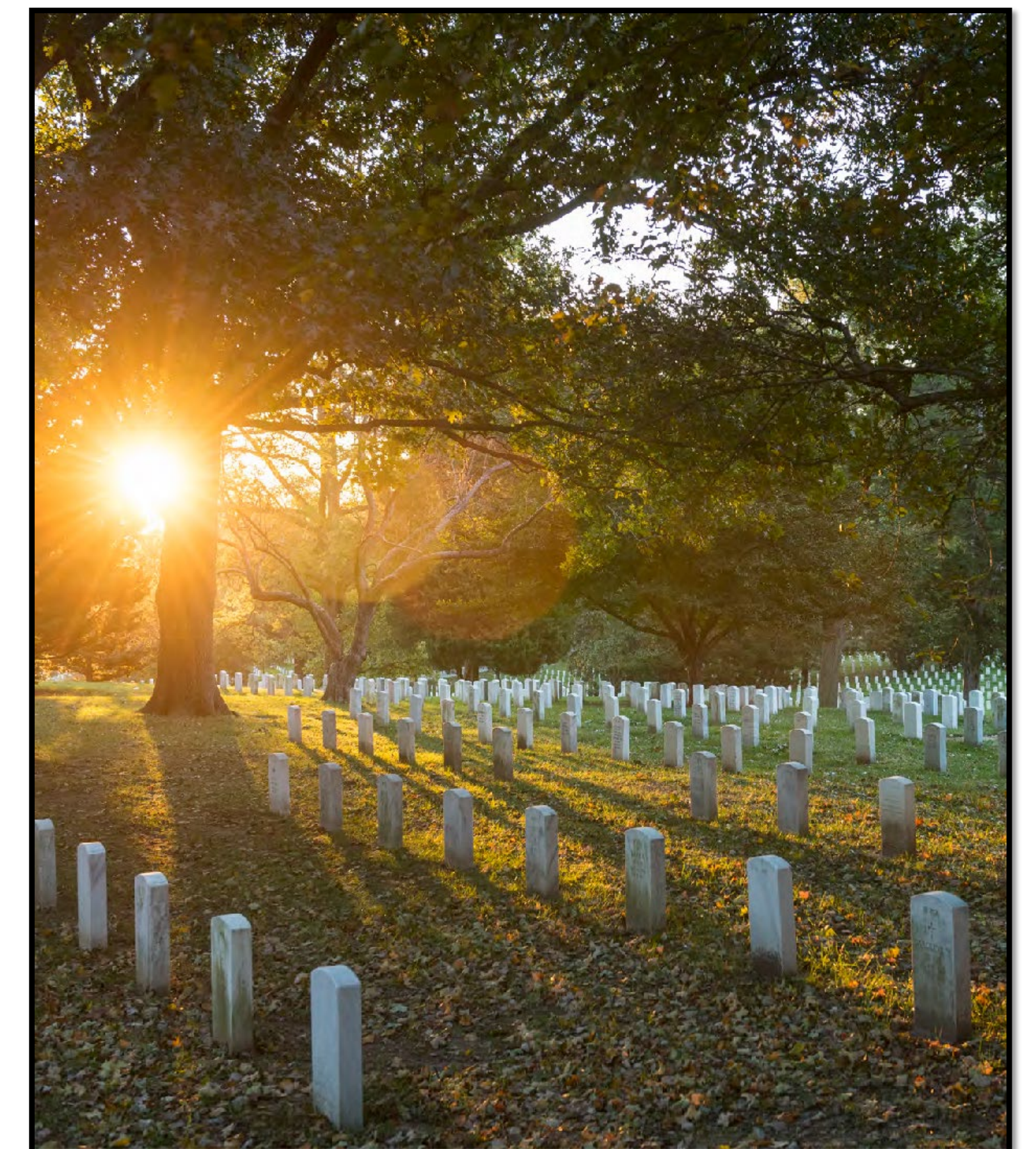
- The purpose and need for the proposed action
- Alternatives (as required by section 102(2)(E) of NEPA)
- The environmental impacts of the proposed action and alternatives
- A listing of agencies and persons consulted.

Based on the EA, the following actions can occur:

- If the agency determines that the action will not have significant environmental impacts, the agency will issue a Finding of No Significant Impact (FONSI). A FONSI is a document that presents the reasons why the agency has concluded that there are no significant environmental impacts projected to occur upon implementation of the action.
- If the EA determines that the environmental impacts of a proposed Federal action will be significant, an Environmental Impact Statement is prepared.

What Resources are Analyzed in an EA?

- Cultural Resources
- Biological Resources
- Air Quality
- Water Resources
- Surrounding Community Impact
- Coastal Consistency Determination
- Utilities/Infrastructure
- Land Use
- Permitting
- Cumulative Impacts
- Viewshed Impacts
- Noise Impacts



NHPA Section 106 Resources To Be Analyzed



ARLINGTON
NATIONAL CEMETERY
HONOR · REMEMBER · EXPLORE

What is NHPA Section 106?

Section 106 of the National Historic Preservation Act (NHPA) requires that federal agencies consider any effect or potential effect of projects they carry out, approve or fund on historic properties listed in or eligible for listing in the National Register of Historic Places.

To successfully complete Section 106 review, federal agencies must do all of the following:

- Gather information to decide which properties in the area that may be affected by the project are listed, or are eligible for listing, in the National Register of Historic Places.
- Determine how those historic properties might be affected.
- Explore measures to avoid or reduce harm (“adverse effect”) to historic properties.
- Reach agreement with the State Historic Preservation Office/Tribal Preservation Office (and, in some cases, the Advisory Council on Historic Preservation) on such measures to resolve any adverse effects— or, failing that, obtain advisory comments from the ACHP, which are sent to the head of the agency.

What Resources are Analyzed in NHPA Section 106?

Prehistoric or historic district, site, building, structure, or object included in, or eligible for inclusion on, the National Register of Historic Places, including artifacts, records, and material remains related to such a property or resource.



Making Your Voice Heard: How to Comment



ARLINGTON
NATIONAL CEMETERY
HONOR · REMEMBER · EXPLORE

PARTICIPATE DURING THE PUBLIC COMMENT PERIOD



Participate in this public meeting



Ask us questions



Review the DOPAA at:

<https://www.arlingtoncemetery.mil/About/Policies-and-Public-Notices/Public-Notices>



or by scanning the QR Code:



Provide written comments at this meeting



Submit comments electronically to:

usarmy.pentagon.hqda-anc-osa.mbx.planning-division@army.mil

We look forward to hearing from you by Nov. 2, 2024.

Your input is important!

The National Environmental Policy Act (NEPA) process stresses the importance of public involvement during the development of proposed actions. Your participation will help us make informed decisions about the Entry Corridor Area Improvements.

A copy of the EA will be available for download on the project website when it is released:

<https://www.arlingtoncemetery.mil/About/Policies-and-Public-Notices/Public-Notices>